

rethink promotion

NEUHEITEN 2025



NACHHALTIGKEITS
MANUFAKTUR



Products,
The brands
strengthen
and that
Environment positive
influence.



11223

InEar Headset IronShell

Wireless Inear Headset with the latest True Wireless Technology (TWS) and integrated microphone. The noble charging box made of robust Me Tall convinces with black finish in stylish grid design.

Perfectly suitable for sports, outdoor activities and everyday business: the soft, ergonomic Ear brackets ensure a safe hold, while the smart one-touch control on the ear cup
Easy operation and quick call acceptance enables. Optional and for an additional cost is one Individual advertising on the housing is possible.



- Type C connection for fast and Comfortable charging of the battery.
- Operating time of up to 10 hours
For long listening pleasure.
- IPX3 spraying water protection-ideal for Sport and outdoor activities.
- BT version 5.3 with up to 10 meters Range for a stable connection.
- Magnetic recording on the Charging box for a safe hold.

⊕
Size: 85,9 x 66 x 28,7 mm
Material: Metall, ABS
Battery: 450 mAh
Input: 5 V ± 0,5 V; Output: 5 V / 1 A
USB-Version: Typ-C; BT Version: 5.3
Splash resistance: IPX 3

✎
Optional
laser engraving: 25 x 20 mm
Centered on the charging box



promotion with style!

10052

Booster 30W

Booster features the finest sound technology and outstanding audio quality! With twice 15 watts RMS and true wireless stereo technology, it can even be paired with another booster.

The modern design combines silicone and textile coating with stylish details and a practical loop. Suitable for outdoor use, with two powerful, rechargeable batteries, Type-C connection and additional playback option via AUX, USB stick or SD memory card - a compact piece of high-tech. Perfect as a promotional item or premium gift with your logo laser engraved.

- ✓ 2 x 15 watts RMS
- ✓ Rich bass & crystal clear treble
- ✓ True Wireless Stereo
- ✓ Silicone and textile cover
- ✓ Splash water protection
- ✓ 2 x powerful batteries
- ✓ Rechargeable via Type-C
- ✓ Impressive design



Size: 105 x 105 x 130 mm
Material: ABS, Silicone, Textile
Akku: 2 x 2.000 mAh
In- / Output: 5V / 2A
Output: 2 x 15 Watt (RMS)
USB-Version: Typ-C
BT Version: 5.0



Optional
Laser engraving: 35 x 35 mm



Size: 245 x 180 x 270 mm
Material: ABS
Li-Po Battery:
4.000 mAh / 7,4 V / 29,6 Wh
Input: Mains plug DC 9 V / 2 A
Output: 5 V / 1 A
Power output: 2 x 8 W
BT Version: 5.0

Further features:

DAB reception: 174 MHz - 240 MHz;
FM reception: 87.5 MHz - 108.00 MHz;
Adjustable display brightness;
3.5 mm AUX jack (line-in); Standby mode;
Flexible antenna; Practical carrying handle



Optional
Pad printing: 60 x 25 mm, 50 x 9 mm

11025

Baustellenradio

Robust DAB+ / FM radio with additional BT 5.0 interface and many functions. With or without cable - a must-have for every construction site.

With integrated smartphone holder on the back and charging option for mobile devices via USB port. Technical highlights such as automatic time, wake-up / sleep function, stereo loudspeakers with 2 x 8 watt power, 10 presets each for your favourite stations, 2.4 inch colour display, IP protection class 54 and the practical carrying handle make this construction site radio an extraordinary gift for all hobby or professional craftsmen.

Operation via power cable or with rechargeable battery.

Customised with logo print. From 1,000 pieces in colour of your choice according to Pantone.





Size: 80 x 41 x 80 mm
Material: Bamboo, solar panel, RPET
Battery: 500 mAh
Input: 5V / 0,35 A
Power output: 5 W
USB-Version: Typ-C
BT Version: 5.1

Optional
Laser engraving or Pad printing: 50 x 20 mm

10049

Solarspeaker
Compact, wireless 5 watt speaker with natural bamboo housing. Particularly sustainable thanks to solar panel. The powerful battery can be charged via a Type-C connection or additionally via daylight. With attractive textile cover on the front, 5 watt output for optimum mobile sound and hands-free function. Customised with logo engraving or print.



10045

Big Bamboo Speaker
Wireless speaker with 5 watt output for optimum, mobile sound quality. The stylish design combines natural bamboo with soft silicone. A refined colour-changing LED in the accentuating light strip and on the membrane also visually creates an atmospheric ambience. With Type-C connection for recharging the battery and additional playback options via micro SD card.



Size: 98 x 98 x 115mm
Material: Bamboo, silicone, metal
Battery: 800 mAh
In- / Output: 5V / 0,4A
Power output: 5W
USB-version: Typ-C
BT version: 5.3

Optional
Laser engraving, Pad printing or
Digital printing: 40 x 40 mm





10048

Cocospeaker
Wireless 5 watt speaker with sustainable housing made from coconut. The highlight: your personalised motif or logo is engraved on the black front and illuminated in white to great effect when in use. The modern textile cover on the rear sound membrane rounds off the design perfectly. Rechargeable via USB type-C / charging cable included.

- +

Size: 80 x 41 x 80 mm
Material: Coconut wood, RPET, ABS
Battery: 500 mAh
Input: 5V / 0,35 A
Power output: 5 W
USB-Version: Typ-C
BT Version: 5.1
- ✂

Illuminated engraving: 50 x 50 mm



11006

Bamboo Speaker
Big Bamboo's little brother: BT 5.0 speaker in a stylish design and great mix of materials.

An all-round, narrow LED light strip accentuates the shape and also serves as a charging and BT control indicator. With 3 watt output, rechargeable battery and playback option via SD memory card. A modern promotional item with your logo as a CO² engraving or print.

- +

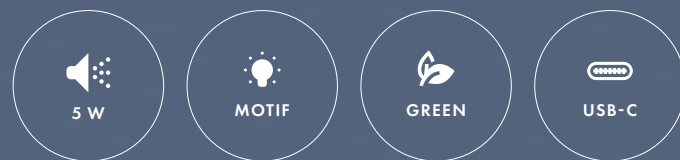
Size: 60 x 60 x 50 mm; Material: Bamboo, silicone;
BT: 5.0; Power Output: 3 W; Input: DC 5 V / 0,4 A;
Battery: Li-Po 300 mAh / 3,7 V / 1,11 Wh
- ✂

CO² engraving / Pad printing: 30 x 20 mm





Lightshow!
Present your brand in the best possible light
with a full-surface motif and light effect



10060

Lightshow Speaker Bamboo

Compact, wireless 5 watt speaker with natural bamboo housing and your personalised full-surface, illuminated motif. With a beautiful textile cover made from recycled PET on the front, Type-C interface and hands-free function.



Size: 80 x 41 x 80 mm
Material: Bamboo, RPET, ABS
Battery: 500 mAh
Input: 5V / 0,35 A
Power output: 5 W
USB-Version: Typ-C
BT Version: 5.1



Illuminated motif: 50 x 50 mm



11210

Lightshow Speaker

Compact, wireless 5 watt Bluetooth speaker with impressive advertising effect. Your individual motif printed photo-realistically on the entire front of the speaker and illuminated from behind when the speaker is in use. The bright areas in particular accentuate the print. With side eyelet for attaching a carrying strap, soft-touch surface and a modern textile cover on the rear the sound membrane on the back. An effective and highly and highly individual advertising medium.



Size: 80 x 80 x 40 mm
Material: ABS (Softtouch), RPET
Battery: 500 mAh
Input: 5V / 0,35 A
Power output: 5 W
USB-Version: Typ-C



Illuminated motif: 75 x 75 mm



Best sound in a handy format.
With stylish aluminium housing
plus shutter function.
This will inspire your customers!



11023

Lumi Speaker

Outstanding sound quality with maximum advertising impact: With this modern Bluetooth 5.0 speaker, your logo will be effectively illuminated in multiple colours.

With a whopping 8 watts of power, hands-free function, additional playback options via AUX or SD card and a powerful rechargeable battery. Stylish design in combination with the silver-grey textile casing and the soft silicone of the carrying strap and base make this loudspeaker an attractive promotional item that impresses with its state-of-the-art technology and harmonious design.



Size: 105 x 105 x 150 mm, Material: ABS, Textile
Battery: Li-Po 1.200 mAh / 3,7 V / 44,4 Wh; Input: DC 5V / 1A,
Power output: 8 W
USB-Version: 2.0; BT Version: 5.0



Luminous logo: 80 x 80 mm



15



10917

Triggerbox

Mini Bluetooth Speaker with integrated Handy-Shutter function. With 3 watts of power, Bluetooth 4.0, Handsfree function and high quality aluminum housing. Easy plug & play.



Size: 36 x 36 x 42 mm
Material: Aluminium; Gewicht: 88 g
Battery: Li-Io 300 mAh / 3,7 V / 1,11 Wh
BT: 5.0; Power Output: 3 W



Pad printing,
Laser engraving: 25 x 20 mm





10062

Clip Headset

Ultralight bone conduction open ear headphones for maximum freedom of movement and the best sound!

Unlike conventional headphones, bone conduction headsets do not cover the ears, but transmit the sound to the hearing centre via the bones, leaving the ear largely free and allowing users to hear ambient noise better. This is particularly advantageous when doing sport or working outdoors, as well as making it more comfortable to wear over a longer period of time.

The practical hands-free function allows users to make phone calls while keeping their hands free. Other features include the BT 5.3 interface, one-touch control, IPX4 water resistance and a future-proof type C charging plug, with an operating time of up to 6 hours. Advertising can be laser engraved or printed on the stylish aluminium charging box with LED status display.



Size: 72 x 39 x 27 mm (Case)
Material: Aluminium alloy, ABS
Battery: Li-Po 30mAh / 250 mAh
Input: 400 mA; Output: 30 mA
USB-Version: Typ-C
BT Version: 5.3

Laser engraving on box:
30 x 5 mm



11028

Prestige S

Stylish Bluetooth 5.0 speaker with 5 watts of power for the best sound quality. The modern material mix of soft silicone, black textile sheathing and metal side membranes make the design particularly attractive. Ideal for mobile music with playback options via SD memory card or AUXIn as well as hands-free function and a powerful rechargeable battery. With silicone loop for carrying or hanging and your logo engraved on the metal membrane Prestige S is always suitable as a promotional item.



10980

Sneaky

Compact Bluetooth 5.0 speaker with 3 watts of power for the best quality mobile sound. quality. Trendy design with textile trim and rubber cord as carrying strap. With your logo on the metallic surface.



Size: 150 x 60 x 106 mm
Material: ABS, Textile
Li-Po Battery:
1.200 mAh / 3,7 V / 4,5 Wh
Input: DC 5V / 1 A
Power output: 5 W
BT Version: 5.0

Engraving: 40 x 20 mm



Size: Ø 98 x 46 mm
Material: ABS, Textile
BT: 5.0
Battery:
Li-Po 300 mAh / 3,7 W / 1,11 Wh
Input: DC 5 V / 1 A
Power output: 3 Watt

Engraving: 18 x 10 mm



11230

Powerbank Magnetic Bamboo
 State-of-the-art MAGSAFE technology meets natural bamboo. The Powerbank Magnetic Bamboo combines the most modern Magsafe technology with a natural bamboo housing. With an output of 5,000 mAh and a wireless loading speed of up to 15 watts, it ensures fast and reliable loading of your devices.

The integrated magnet enables simple and Precise connection to your iPhone®(from model 12), so that The charger is safely docked and optimally aligned.

In addition, the charger can also be a classic power bank be used to load devices via a cable - perfect for maximum flexibility on the go.



11229

EasyCharge Kombi
 Wireless Charger and cable set in one! Well thought-out combination of wireless 15 watt charger and integrated cable set. The elegant, rounded bamboo housing gives it product a high -quality look and ensures a natural touch.

Under the loading area that pushed aside like a lid Or can be removed, a multicompatib les cable set is hidden. This includes various adapters and enables light maximum flexibility for a wide variety of end devices.

The integrated cable set covers all common connections: Type-C on type C, micro USB, Lightning and USB Type-A The adapters are space -saving and clearly arranged, Made of resource -saving wheat straw plastic. With the practical hand loop, Easycharge Kombi becomes Perfect travel accessory - compact, versatile and always ready to go.



Size: 109 x 21 x 72 mm
 Material: Bamboo, ABS, Wheat straw fibers, nylon
 Input: 5V / 2A; 9V / 2A; 9V / 2,22A
 Output: 5V / 1A oder 7,5 V / 1A oder 9V / 1,1A oder 9V / 1,67A
 USB-Version: Typ-C

Optional
 Laser engraving or print: 40 x 20 mm



MagSafe Technologie
10.000 mAh
Illuminated logo



Bis 15 Watt Output
Typ-C In- & Output
Recyceltes ABS



⊕
Size: 110 x 70 x 19 mm
Battery: Li-Ion 10.000 mAh
Input: Typ-C 5V / 3A, 9V / 2A
Output: TypC: 5V / 3A, 9V / 2.22A; 12V / 1.67A
Wireless Output: 15W
Material: ABS
Color: black

✦
Optional
Luminated logo (engraving): 40 x 70mm

Magnetisches Ladegerät und klassische Powerbank mit

11221

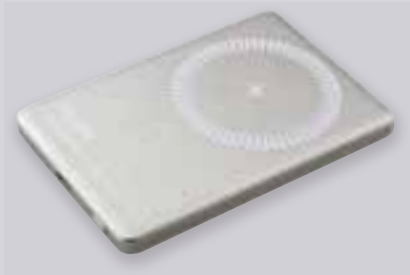
Powerbank Magnetic Glow

Magnetic charger and classic power bank with 10,000 mAh and optional light logo.

The power bank Magnetic Glow in the robust housing made of Recy Celtem ABS (RABS) with a capacity of 10,000 mAh and one Wireless loading speed of up to 15 watts (Magsafe) ensures fast and efficient charging of your devices.

The integrated magnet enables a precise connection With your iPhone®(from model 12), so that the charger is safe docks and wirelessly loaded. For other Qi-capable devices can use it as a powerful wireless charger become.

Optional: Set a statement with your white glowing logo on the back.



11245

Powerbank Magnetic Alu

Modern, versatile and elegant - the perfect solution for mobile everyday life!

This high-quality power bank with noble aluminum housing combines style and function. Thanks to the latest MagSafe technology download your iPhone (from version 12) wirelessly, quickly and safely with up to 15 watts. Magsafe ensures precise orientation and a stable connection - for effortless and reliable load.

In addition, the power bank offers a type C input and Output and can also be used with cable if necessary, to ensure maximum flexibility.

The minimalist design and first -class workmanship make an ideal business companion and a style full give-away. You can use your engraving on request add and create an individual highlight.



Size: 105 x 67 x 8,5 mm
Material: ABS, Aluminium
Battery: 5.000 mAh
Input:
5 V / 3 A, 9 V / 2 A, 12 V / 1,5 A, PD18W
Output:
5 V / 3 A, 9 V / 2.22 A, 12 V / 1,67 A, PD20W
Power-Output: 15 W max.
USB-Version: Typ-C

Color: silver



Optional
laser engraving: 50 x 60 mm



Size: 68 x 60 x 24 mm;
Material: ABS, Aluminium
Battery: 10.000 mAh
Input: DC 5V/3A, 9V/2A ,12V/1,5A, PD18W
Output: DC 5V/3A, 9V/2,22A, 12V/1,67A, 10V/2,25A; PD22, 5W
USB-Version: Typ-C

Color: gunmetal



Optional
laser engraving: 35 x 35 mm

11251

Powerbank Loop 10.000

Performance meets refined design

With this ultra -compact Powerbank in the high -quality aluminum housing you can experience mobile shops. With a capacity of 10,000 MAh and a clever hand loop that simultaneously as a charging cable serves, this power bank becomes your perfect companion for under the way.

Fast charging: supports a maximum output power of 22.5 W, ideal for most smartphones with quick charging function.

Innovative design: The hand loop consists of a 60 W type C-on-type C cable, which is both as a supporting solution and for Charging the power bank can be used.

Ultrac compact: The size is similar to that of AirPods - small enough to fit into every bag.

Color adjustment possible: Ideal for OEM projects- Choose the color that fits your brand.

Ideal for on the go: whether for everyday life, when traveling or at longer excursions - this power bank is the perfect one Combination of functionality, portability and style.





Size: 150 x 146 x 75 mm;
Material: ABS

Wireless Power-Output:

- › Smartphone: 15 W (max)
- › Apple AirPods Output: 5 W (max)
- › Apple Watch: 3 W (max)

USB-Version: Typ-C
Color: dark gray



Optional
Pad printing: 40 x 30 mm



11241

Charger

Der 3-in-1 Charger im einzigartigen Gabelstapler-Design

This charger is not only a real eye -catcher, but also a multi-talent: Designed as a mini forklift, it conjures up hers customers a smile on the face and at the same time loads up to three devices on.

- › Apple Watch (from series 1 with max. 3 watts)
- › Apple Airpods (from Generation 2 with 5 watts)
- › All Qi-capable smartphones (with 15 watts)

Practical and clever: Your smartphone will find his Place on the front of the forklift - in an optimally inclined The bracket that keeps it well in view.

A highlight with color: The bright rear light provides for atmospheric accents and can be set in four different colors as desired.

With USB-C connection, including cables and on request with your Logo as pressure on the front



Ingenious 3in1 principle
Wireless charger for smartphones,
headphones and Apple Watch®



Power for all your devices
Powerbank with 10,000 mAh and wireless charger for
inductive headphones and Apple Watch®



SUPPLIED IN AN ATTRACTIVE
& PRACTICAL BAG



10058

ClapCharger

Brilliant wireless, foldable 3in1 wireless charger. Fits in any trouser pocket and charges suitable smartphones, in-ear headphones and Apple Watch® via induction in no time at all. The magnetic surface closes the charger perfectly and provides an optimum hold for your devices. Thanks to two folding axes, the charger can be easily folded into a smartphone holder. Slim, compact and including a nice pouch, it is easy to transport and is therefore an ideal travelling companion. With USB type C interface.

Watch charging function for Apple Watch® only!



Size: 245 x 75 x 6,5 mm
Material: PU
Input: 9V - 2.2A / 12W - 2A
Output - Smartphones: 15W
Output - Apple Watch: 2.5W
Output Headphones: 3W
USB-Version: Typ-C



Pad printing white or silver:
40 x 20 mm

10063

Watchbank

Compact and amazingly powerful 3in1 power bank with 10,000 mAh. The additional wireless charging function for induction-enabled smartphones, headphones and Apple Watch® makes Watchbank a practical all-rounder. With contemporary type-C input and output (max. 22.5 watts) for cable charging, 15 watts or 3.5 watts (watch) wirelessly, customised with your logo as a print, including type-C charging cable in individual packaging.



Size: 113,8 x 63,6 x 26 mm
Material: ABS
Battery: 10.000 mAh
Typ-C In- & Output: 5V / 3A, 9V / 2A, 12V / 1,5A
USB-A Output: 4,5V / 5A, 5V / 4,5A, 5V / 3A, 9V / 2A, 12V / 1,5A
Wireless Output (Smartphones): max. 15W
Wireless Output (Apple Watch): 2.5W
USB-Version: Typ-C



Pad printing: 30 x 40 mm





10968

GLOW Shell RPET

Classy desk accessory with integrated wireless charging station for all suitable devices. 3-way USB charging hub and tray for pens or paper clips. The matt, deep black case with soft-touch finish is made of recycled PET (RPET). With your effectively illuminated logo, Glow Shell RPET will be a real eyecatcher for your customers.



Size: 254 x 100 x 10 mm; Material: RPET
Input: DC 5 V / 2 A; Output: 3 x 5 V / 2 A
Wireless Output: 5 W



CO²-Laser engraving: 80 x 40 mm
Standard light color: white
more on request

11205

Eco Shell Charger

Sustainable and practical organiser tool for the desk. Eco Shell Charger combines a pen tray with a 10 watt wireless charging station for all induction-compatible devices. And almost plastic-free: with a housing made from certified board and the matching USB type C to cable made of polylactide plastic. With generous area for your advertising!



Size: 248 x 98 x 8,5 mm; Material: Recycled cardboard
Input: 9 V / 1,67 A; Output: 10 W; USB Version: Typ-C
Accessories: PLA Cable



CO²-Laser engraving: 60 x 30 mm



11219

EasyCharge 15 S – Express

Compact 15 watt wireless charger in a sustainable bamboo housing and type C connection. Brings your logo directly into your customers' field of vision as a wooden laser engraving. With 15 watt wireless output for inductive charging of all newer smartphones. A resource-saving and effective promotional item.



Size: 60 x 60 x 9 mm; Material: Bamboo
Wireless Output: 15 Watt; USB-Version: Typ-C
Input: DC 9 V / 1,67 A



CO²-Laser engraving: 60 x 30 mm



11021

Powerbank Solar Wireless

Sleek modern power bank with 10,000 mAh and 5 watt wireless charging function. In a resource-friendly housing made of beautiful bamboo wood. The solar panel on the back automatically recharges the powerbank in daylight. With double USB-A output for simultaneous charging of two devices, on-off switch, energy level indicator and Type-C connector for charging with cable. A sustainably designed piece of high-tech that your customers will love. Customised with logo as CO2 engraving on the bamboo case.



Size: 150 x 75 x 20 mm; Material: Bamboo
Li-Po Battery: 10.000 mAh / 3,7 V / 37 Wh
Input: USB-C - DC 5 V / 2 A; Solar – 150 mAh / h
Output: DC 5 V / 2 A; Wireless Output: 5 W



Pad or digital printing
and CO² engraving: 60 x 25 mm



11011

EasyCharge Wood v2

Attractive wireless charging station made of walnut or maple wood with a slim aluminium frame. Recharges all wirelesenabled smartphones with 10 watts. Impressive processing, ultra-flat design and pleasant haptics. With recessed, all-round LED band that indicates charging status and activity with coloured light. Available in walnut or maple wood. Customised with CO2 engraving on the wood.



Size: Ø 100 x 7 mm; Material: ABS, Wood
Input: DC 5 V / 2 A
Wireless Output: 15 W



Pad or digital printing: 30 x 40 mm
CO² engraving: Ø 94 mm



10951

EasyCharge Bamboo

Simple and beautiful wireless charger made of fast-growing bamboo wood. Convenient and with style, it recharges any wireless-enabled smartphone by simply touching it. With your logo elegantly engraved – a real eye-catcher on any desk.



Size: Ø 92,7 x 9,4 mm; Material: Bamboo
Wireless Output: 15 Watt



CO² engraving: Ø 45 mm



11004

EasyCharge Bamboo Desk

Sustainable smartphone holder with integrated wireless charging station. Recharges all suitable devices with 10 Watt wireless output and shows the charging activity with a control LED. Optimal tilt angle for using the smartphone while charging at the same time. Beautiful look and feel thanks to fast-growing bamboo wood. Customised with high-quality engraving of the logo in the wood.



Size: 130 x 76 x 70 mm; Material: Bamboo
Wireless Output: 15 W; Input: DC 5 V / 1,5 A



Pad printing or CO² engraving: 40 x 60 mm



10061

Glow Stand

Convenient and sustainable smartphone holder with integrated wireless charging station. Charges all suitable devices with 15 watts wireless output. The highlight: your logo engraving is effectively illuminated from behind when in use. A useful, environmentally friendly and, above all, promotionally effective tool for every desk.



Size: 130 x 76 x 70 mm
Material: Bamboo, ABS
Input: 5V / 2A
Output: 9V / 1.67A
Wireless Output: 15 Watt
USB-Version: Typ-C



Illuminated engraving: 80 x 50mm
Luminous logo: white



11201

LogoCharger »6«



Size: 85 x 95 x 10 mm; Material: Bamboo, ABS
Input: 9V / 1A; Output: 5V / 2A
Power output: 15 Watt; USB-Version: Typ-C



Digital printing, illuminated: 60 x 60 mm



11216

LogoCharger »round«



Size: 85 x 85 x 10 mm; Material: Bamboo, ABS
Input: 9V / 1A; Output: 5V / 2A
Power output: 15 Watt; USB-Version: Typ-C



Digital printing, illuminated: 70 x 70 mm

11214

5in1 LogoCable RPET

Finally – one cable for all your devices! The 5in1 LogoCable with USB A & C combination on one side, Micro USB, Lightning and C on the other side, covers all common device types and also impresses with its sustainable processing:

Cable sleeve made of recycled PET (RPET) and illuminated area on the central element in a wooden socket. Your engraved logo or motif is illuminated from behind when the cable is in use, thus into the consciousness of your customers.



Length: 1m, Material: Bamboo, RPET, Metal, Textile
Input: 5V; USB-Version: A & C



Illuminated engraving: 25 x 10 mm



10686

GLOW Desk

Patented design! Practical desktop tool with illuminated logo. A must-have for every modern workplace. Glow Desk is pen holder, wireless charging station, smartphone holder and USB hub all in one. With your logo as a backlit engraving on the matt soft-touch surface, your brand will always be visible for your customers.

4-in-1:

Pen Holder, Wireless Charger,
Mobile Phone Holder & USB Hub



Size: 105 x 67 x 97,5 mm
Material: ABS (Softtouch)
Input: DC 5 V / 2 A
Wireless Output: 15 Watt



Engraving: 50 x 5 mm;
LED colour: white
From 1,000 pieces available also
in red, blue or green



1 X

15 W

LOGO

15 W

MOTIF

Lightshow Charger round & square

Extra flat wireless charger with 10 watt output for convenient, inductive charging of all wireless devices. The advertising „lightshow“ begins when you use the charger. your individual, full-surface photo print is effectively illuminated by LEDs on the inside – especially strong especially at the brightest points of your motif.

Radiant eye-catchers on your customers' desks – whether *round* or *square*.



11015

Lightshow Charger round



Size: Ø 100 x 8 mm; Material: ABS / Alu; Input: DC 5 V / 2 A;
Wireless Output: 15 W; USB-Version: 2.0



Offset print: full surface

11016

Lightshow Charger square



Size: 111 x 68 x 8 mm; Material: ABS; Input: DC 5 V / 2 A;
Wireless Output: 10 W; USB-Version: 2.0



Offset print: full surface

11026

EasyCharge GLOW v3

Wireless charging station with 10 Watt wireless output and anti-slip applications on the back. Ultra-flat design and deep black soft-touch surface. The perfect stage for your brand presentation as a highlight. Because the engraved logo is effectively illuminated when in use.



Size: Ø 100 x 24 mm
Material: ABS, Softtouch
Input: DC 5 V / 1,5 - 2 A
Output: Wireless 10 W



Engraving: 40 x 70 mm
Standard light color: white
From 1,000 pieces available also in
red, blue or green



10 W

LOGO

11017I

Lightshow Powerbank

Compact powerbank with 10,000 mAh high-performance battery and effectively illuminated photo-realistic digital print. A radiant eye-catcher with many technical features such as a double 2A USB output for simultaneous charging of two devices, LED indicator for monitoring the battery capacity and a charging cable.



Size: 140 x 71 x 13 mm; Material: ABS
Lithium Polymer Akku:
10.000 mAh / 3,7 A / 37 Wh
Input: DC 5 V / 2 A; Output: DC 5 V / 2 A



Offset print: full surface

10.000 MAH

MOTIF





Size: 140 x 71 x 13 mm

Material: Coconut fibre mixture

Battery: Li-Io, 10.000 mAh / 37 Wh

USB-Version: Typ-C



Pad printing: 70 x 35 mm



10046

Cocobank

High-performance power bank with 10,000 mAh, type C input and output, 2 x USB A and micro USB output. The housing made from a coconut fibre mix is more environmentally friendly in production and helps to avoid plastic. Reliably recharges both smartphones and tablets on the go with a high-performance lithium-ion battery. With on/off power button, LED charging status indicator and plenty of space for your personalised advertising.





11220

Powerbank Wireless Digital

Stylish and efficient 10,000 mAh power bank in an attractive design. The additional 15 watt induction charging surface recharges all wireless-charging smartphones. Nice details: the digital charge level indicator on the high-gloss front and the practical vegan leather strap. For wireless charging, devices are placed on the back and secured with small suction cups.

⊕
Size: 147 x 70 x 19 mm
Material: ABS, Acrylic, vegan leather
Battery: Li-Po; 10.000 mAh
Input: 5V / 2A, 9V / 2A, 12V / 1,5A
Output 5V / 4,5A, 9V / 2A, 12V / 1,5A
Wireless Output: 15 W

✂
Pad printing: 30 x 30 mm



11200

Powerbank Flat 5C

Stylish and reliable mobile battery with 5,000 mAh charging power and type C connection for all current smartphones or tablets. The high-quality aluminium housing in black or silver is ideal for your individual logo engraving or print. With LED charge indicator, on/off switch, practical size and charging cable included.



⊕
Size: 68 x 131 x 10 mm; Material: ABS, Alu
Battery: Li-Po; 5.000 mAh
Input: DC 5V / 2A; Output: DC 5V / 2A
USB-Version: Typ-C, Typ A, Micro-USB
Colour: black / silver

✂
Pad printing: 40 x 30 mm;
Engraving: 40 x 30 mm



10961

Powerbank Flat 10

Striking powerbank with 10,000 mAh high-performance battery, solid aluminium housing, double USB output, charging indicator and Type-C port. The dominantly designed button integrated into the black or silver unibody case makes the Flat 10 an elegant promotional gift for discerning brands.

⊕
Size: 136 x 68 x 14,5 mm; Material: Metal
Battery: Li-Po; 10.000 mAh / 3,7 V / 37 Wh Output 5 V / 2 A
✂
Pad printing: 50 x 35 mm; Engraving: 50 x 35 mm



10568

Powerbank Flat

With its extra flat design, Powerbank Flat fits in any trouser or jacket pocket. The elegant aluminium housing offers a perfect stage for placing large advertising messages as a print or engraving.

⊕
Size: 67 x 110 x 9,5 mm, Material: ABS, Aluminium
Battery: 4.000 mAh / 3,7 V / 14,8 Wh, Output: 5V / 1A
✂
Pad printing: 70 x 35 mm; Engraving: 70 x 50 mm



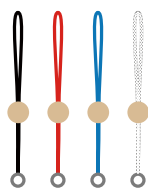
11232 & 11235

Lanyard & Keyband Woodtag

Attractive fabric lanyards or key bands with bamboo slider. These stylish accessories made of recycled polyester (RPET) are the ideal choice For trade fairs, events or advertising campaigns. Equipped with robust keys rings made of metal, they offer functionality and durability in a starting design.

The high-quality bamboo slider is perfect for the engraving of your logo And ensures a natural look.

In four attractive standard colors available immediately from warehouse. If desired and for an additional cost, we also manufacture it in your company color According to Pantone®- for an even more individual brand presentation.



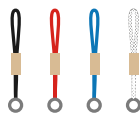
11232

Lanyard Woodtag

Size Lanyard: 450 x 5 x 5 mm
Size wooden slider: Ø 38 mm x 10 mm
Material: Recycltes PET (RPET), Bamboo, Metall



engraving: 25 x 25 mm



11235

Keyband Woodtag

Size Keyband: 180 x 6 x 6 mm
Size wooden slider: 35 x 16 x 16 mm
Material: Recycltes PET (RPET), Bamboo, Metall



engraving: 30 x 10 mm

Standard colors for all woodtags:

Black, red (Pan 032), blue (Pan 300) or gray (Pan warm gray 2c) / white mottled



Size: 1.000 x 15 x 6 mm
Material: Metall, Nylon, PVC
Input: USB A & Typ-C
Output: Typ-C & Lightning
Power-Output: 100 W
USB-Version:
1 x USB A; 1 x Lightning; 2 x Typ-C



Optional
laser engraving : 5 x 15 mm



11249

Magnetic Cable

This innovative charging cable is the perfect one All-in-one solution for your devices. With its robust Nylon coating and high-quality metal plugs it combines stylish optics with durable quality.

Thanks to the clever equipment with two connections every end (USB type C and Lightning as well as USB-A And type C) the cable offers four different application options and is compatible with almost all devices. A cable for all devices - ideal for modern everyday life.

Another highlight: the magnetized cable rolls automatically together, what more order and Comfort on the go.

On request, the metal elements can be used with their Logo are engraved to an individual accessory to accomplish.

Modern, versatile and practical - the ideal charging cable for Every opportunity!





11240

SlimSpot Designleuchte

Elegant design meets effective lighting!

The beauty of the slimspot design lamp lies in its clear

Geometry: The slim, conical tapering body goes

Seamlessly in the simple, bent lamp head.

This design gives the LED a striking silhouette and directs

Your warm white light on a gently illuminated spot.



Size: Ø 50 x 360 mm

Material: ABS

Battery: 1.800 mAh

Input: 5 V

Output: 3,7 W; 3.000 Kelvin, 200 Lumen

USB-Version: Typ-C



Pad printing: 30 x 15 mm



Sommelier Serie

All sommeliers are delivered with an attachment,
which enables the lampshades to be commercially available
To be able to assemble bottle necks.

A great way for an attractive one
Upcycling old bottles or as a doctorate for your product.



10053

Tischleuchte Sommelier

Refined and versatile design light made of metal. The modular, five-part structure allows it to be used as a table lamp in two possible heights. In addition, the LED shade can be mounted on many commercially available bottle necks using an attachment. A great way to attractively upcycle old bottles or promote your product. Energy-saving LED with dimming function, infinitely variable RGB colour changer and auto-ambient light. The one-touch control enables intuitive and easy operation. Rechargeable battery with type C connection. A practical and stylish accessory for indoors and outdoors.



Size: Ø 12 x 21 cm / 25 cm / 36 cm
Materia: Metall, ABS
Battery: 4.000 mAh;
Input: 220 V; Output: 5 V
USB-Version: Typ-C
Schutzklasse: IPX 44



Laser engraving on base:
40 x 30 mm





11243

Sommelier mini

Whether in the conference room, in the living room, on the balcony or on the go - Sommelier Mini ensures the perfect lighting mood inside. Made of matt black aluminum and equipped with anti-slip and anti-scratch protection at the base, this table lamp convinces with yours timeless design and its versatile possible uses.

With built-in 1,200 mAh lithium battery, which is rechargeable via type C for a long operating time. With the user-friendly one-touch button you can get from three light temperatures (warm white, neutral white or choose cold white) and dim. The 15 integrated LEDs guarantee optimal brightness and maximum flexibility.

In the set with a suitable attachment for all commercially available bottle necks.



Size: 95 x 95 x 200 mm
Material: Metall, ABS; Battery: Li-Battery; 1.200 mAh
Input: 5V / 1A, Output: 1W; max. 100 lumen
Protection class: IPX 44



Laser engraving on lampshade above: 30 x 10 mm



11242

Sommelier Pure

Stylish highlight with many extras. Whether in the conference room, in the living room or on the balcony - the sommelier Pure brings style and functionality to every room or outside. thanks to a powerful battery, a fast type C charging connection and IP20 spraywater protection is also the ideal companion for travel, camping or garden festivals.

Made made of high quality metal with a matt, white surface, convinced the table lamp with timeless design and versatile possible uses.whether warm white, neutral white or cold white - the light color can infinitely over the user-friendly one-touch interface. Integrated in the lampshade 18 powerful LEDs offer optimal brightness and flexibility.



Size: Ø 100 x 380 mm
Material: Metall, Acryl
Battery: Lithium Ionen Battery; 1.800 mAh
Input: 5V / Output: 3,7 V; 200 Lumen
USB-Version: Typ-C



Tampon print on base: 40 x 20 mm





11236

Camplamp Retro
 Modern lantern in retro look.
 Ideal for outdoor & camping

This weatherproof lantern (IPX3) in charming retro design is perfect for camping, excursions or the garden. With two powerful, rechargeable lithium batteries (2 x 2,000 mAh) and a USB-C connection ensures it reliable lighting in every situation.

In keeping with the vintage design, light intensity and color can be infinitely varied Adjust a setting wheel. Three bright ceramic cob strings and nine cold white LEDs deliver up to 260 lumens. A highlight is the integrated, 15 meter long LED light chain, which is easy pull out and be picked up again by crank. With three modes - warm, colorful or flashing multi -colored - she always ensures an atmospheric atmosphere.

Practical: With a USB A output, the lantern also serves as an emergency power source For smartphones. An additional LED on the base can also be used as a pocket or Warning lamp can be used.

We place HR logo directly on the front at the bottom.

- ⊕
 Size: 110 x 110 x 190 mm
 Material: ABS, Polycarbonat, Metall
 Battery: 2 x 2.000 mAh; 18650
 Input: 5 V 1 A
 Output: 260 Lumen
 USB-Version: Typ-C
- ✂
 Pad printing: 35 x 15 mm





11227

Festival LED

Wireless, recurring camping & outdoor light with extendable Lights and integrated power bank. Ideal lamp for camping catches, garden festivals or outdoor activities.



With the practical hook, it can be easily let on the tent roof or caravan attach. The integrated, eight meter long RGB light chain can easily pulled out and rejected by crank - without tangling, for a quick and atmospheric party lighting.

The powerful 1,200 mAh battery offers one with a USB A output reliable emergency power reserve and supplies devices with up to 3.7 volts.

Three light modes on the lamp (2x warm white / flashing) and six different Modi for the light chain (2x colored / 2x yellow / 2x flashing) always ensure the right one Light in every situation. With 200 lumens, IPX4 spraying water protection and a USB-C-input for a quick loading, Festival LED is perfectly equipped for all outdoor situations.

If desired and at an additional cost, we refine the Festival LED with your logo, clearly visible in the middle of the housing.



Size: 100 x 100 x 32 mm
Material: ABS
Battery: 1.500 mAh
Input: 5V; Output: 3,7 V
Luminosity: 200 Lumen
USB-Version: Typ-C



Pad printing: 18 x 18 mm



11239

Snap LED

Clever, compact outdoor lamp for camping, hikes or execution. Snap LED combines high functionality with unique design: the included silicone cover in the charming lampshade look sprinkles the light pleasantly soft and gives the lamp that certain something.

Eight visible LED "glow threads" take care of a total of five Dome levels for the exactly the right atmosphere, either with Warm or cold light. A powerful IXPE LED on lower end can also be used as a flashlight or flashing warning light.

He integrated 600 mAh lithium battery guarantees hours Operation and can be conveniently rebuilt using a type C cable load. Thanks to the integrated carabiner hook, the snap can be simply attach the LED to tents, branches or backpacks - for perfect light and free hands.

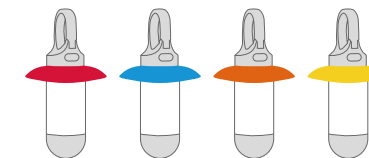
On request and at an additional cost with your logo as a pressure the fluorescent cylinder. Lampshade in white, red, blue, orange or yellow available.



Size: 33 x 127 mm; Material: ABS, PC, Metall
Battery: 3,7 V; 600 mAh; Lithium-Akku; Input: 5 V / 0,5 A; Output: 5 V / 0,5 A
Power-Output: 200 Lumen (warm white), 120 Lumen (cold white)
USB-Version: Typ-C



Pad printing: 30 x 10 mm





Size: 77,9 x 77,9 x 245,5 mm
Material: ABS und Edelstahl 304
Battery: 18650 2.500 mAh
Input: 5 V
Output: 12 V
Power-Output: 72 W
USB-Version: Typ-C



Pad printing:
25 x 40 mm

11244

Compresso

Espresso in barista quality,
always and everywhere

Enjoy the perfect espresso wherever
they are: Compresso, the compact,
wireless espresso machine, is the ideal
companion for travel, long working days
or outdoor adventure.



Hoch performant

Thanks to three powerful batteries, the Compresso is complete wireless and via type C connection even during use charging. The smart heating function enables the production with hot or cold water. Cold water is in just 3 heated on the optimal brewing temperature up to 6 minutes. For up to 50 cups of 60 ml!

3 in 1 Funktionalität & smartes Design.

The well thought-out design offers you the choice between ES Presso or coffee powder and compatible capsules. The fresh Brewed coffee flows directly into the integrated cup that can be stowed away on the device. Easy to clean, thanks Easy disassembly of the individual parts.

Perfekt für unterwegs

Fits with the size of an average thermos the Compresso in every luggage. Its design and low weight make it an indispensable companion for coffee lover.

Optionally, refinement with your logo is possible - a First class premium gift for demanding connoisseurs.

Experience coffee enjoyment - anytime and anywhere.



11226

WorkBeam Power LED

Baustrahler 2.0!

The wireless LED building spotlight with a powerful 20 watts COB technology offers impressive 1,500 lumens (Max.) And ensures excellent illumination with everyone on gift. With four practical modes - strong light, dimmed light, SOS signal and flashing mode-the spotlight adapts flexibly Their needs.

Thanks to the innovative design with a two -axis steel tube can folded workbeam power LED at will and both are used as a floor lamp, hanging lamp or construction spotlight. The robust steel tube is equipped with rubber protection and anti-slip-ele ments, which ensure additional stability and durable.

Another useful feature - the Powerbank function: With the integrated USB-A output, you can charge devices under the way. The powerful battery (4,400 mAh) offers up to 6 hours of operation and can be conveniently via USB Type-C charge.

The lamp can be flat light and space -saving Fold together so that they are ideal for use Renovations, construction sites or camping trips is suitable.

On request and for an additional charge, Workbeam Power can LED with an individual customer logo on the front be personalized.



Size: 245 x 225 x 35 mm
Material: ABS, Metall
Battery: 4.400 mAh
Input: 3,7 V
Output: 3,7 V
Output: 5 V, 1 A; 1.500 Lumen (max.)
USB-Version: Typ-C



Pad printing: 45 x 10 mm



11231

LaserScale

Extremely handy, cordless measuring device with precise laser technology for measuring distances or dimensions. Fits in every shirt pocket or on the key ring!

- ✓ Laser class 2 for the highest precision
- ✓ LCD display with a customizable display (imperial / metric)
- ✓ High quality aluminum housing
- ✓ One button handling



Size: 68,5 x 22 x 14 mm
Material: Aluminiumlegierung
Battery: 250 mAh LithiumAkku
Input: DC 5V / 1A
USB-Version: Typ-C



Pad printing or engraving: 15 x 8 mm





Size Case: 110 x 60 x 35 mm
Size lamp: Ø 30 x 80 mm
Material: Aluminium
Battery: 3.7V 2.600 mAh 20650 Lithium
Input: 5V / 1A
Output: max. 600 Lumen
USB-Version: Typ-C



Laser engraving on lamp: 25 x 10 mm
Doming sticker on case



11234

Torchy

Versatile, powerful and practical.

The Torchy is a compact, robust flashlight made of high -quality aluminum. With the latest COB technology, it offers up to 600 lumens, dimmable in three stages, plus a flashing light mode as an emergency signal.

The integrated 2,600 mAh lithium battery is charged via USB-C-without any Batteries. The delivery takes place in the practical soft shell case including charging cable, ideal as a giveaway.

A stable clip and an integrated magnet ensure flexible fastening options - perfect for work and leisure.



11250

Mini USB-Leuchte

Mini flashlight with carabiner-compact, practical and rising.

The ideal companion for on the go: this little flashlight can be conveniently attached to the keychain or backpack thanks to the carabiner. Instead of batteries, it has one long-lived battery, the one via the integrated USB-A plug can be charged directly on the PC.

Available in five lively colors with high quality soft-touch surface, the mini USB lights are not only functional, but also a great gift or advertising material. On request, the lamp can be used with a 1C logo pressure in white, black or silver can be designed individually.



Clever packed in our tea bags



Size: Ø 22 mm x 54 mm
Length of key ring: 48 mm
Material: ABS
Battery: 60 mAh
Input: 5V / 1A
Output: 25 Lumen
Power-Output: 3W
USB-Version: USB A



Pad printing: 10 x 18 mm





11237 **Lunch Buddy M**



Size: Ø 150 x 85 mm
Material: Silikon, Heat -resistant borosilicate glass
Volumen: 650 ml



Print 1c on the carrier tape: 50 x 15 mm



11233 **Lunch Buddy S**



Size: Ø 112 x 75 mm
Material: Silikon, Heat -resistant borosilicate glass
Volumen: 400 ml



Print 1c on the carrier tape: 50 x 15 mm



With:
The beautifully designed
Recipe book »MealPrep«
With great ideas for yours
Healthy lunch.



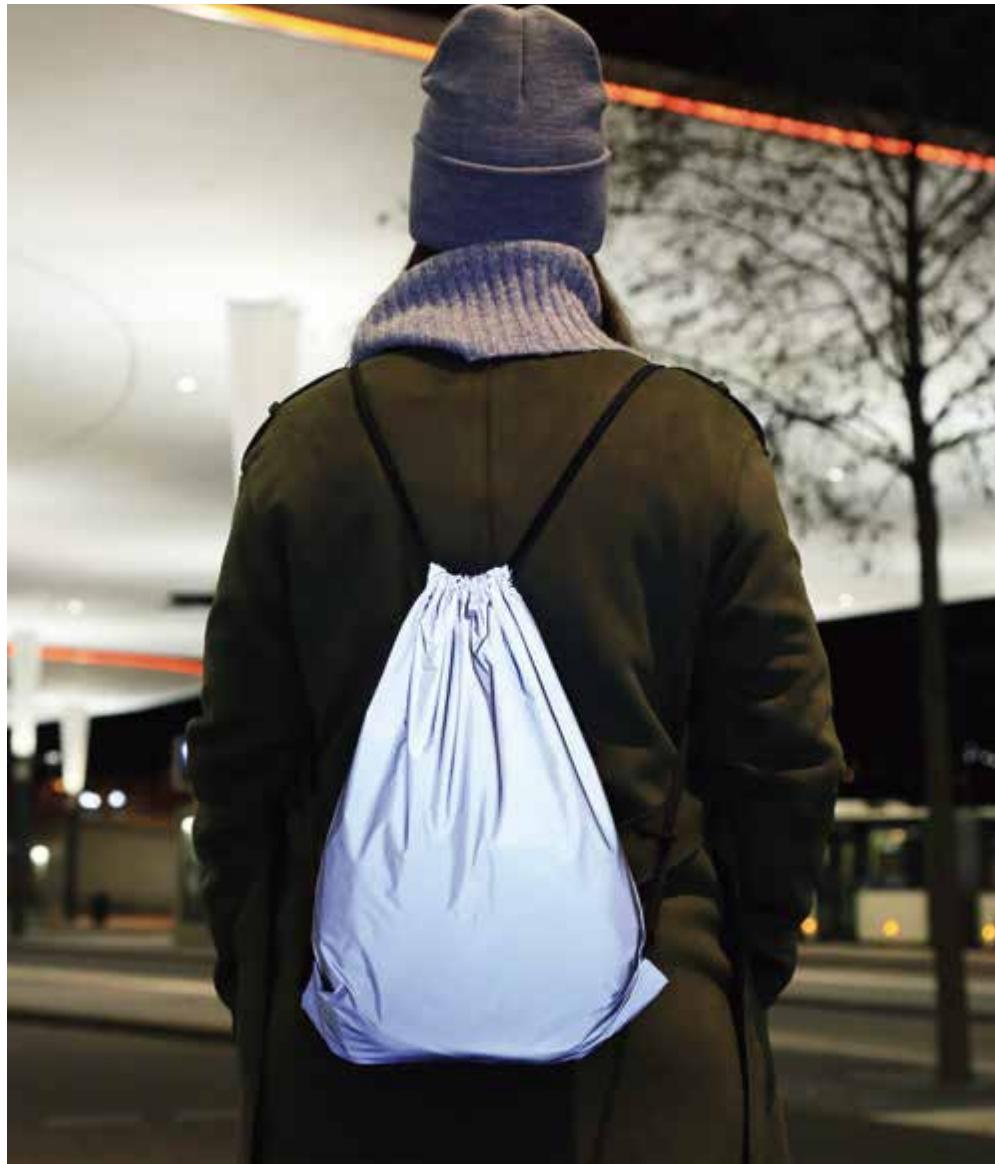
11237 & 11233

Lunch Buddy M & S
Practical, robust and versatile!

Our lunch box made of heat -resistant borosilicate glass is that perfect companions for your everyday life - be it in the office, at school or on the go. Combined with a bracket made of food-real platinum silicone, she convinces with its durability and easy handling. It is cold and heat-resistant, freezingsuitable up to -20 ° C, can in the microwave or in the steam cooker to be heated up to 200 ° C and is also suitable for direct ser-four on the table. The reinforced silicone seal ensures that that nothing runs out. Your food stays fresh while smells are effectively avoided.

The smooth edge and the dirt-repellent surface enable a child's light cleaning. For safe handling, the underside is with anti-brewing and anti-slip protection provided. Particularly practical: this can be done on the top set the date to see the storage days in view hold.

The included recipe book provides the best ideas for a meaning full and delicious "meal-prep" and can be provided with your logo on the title on request. Further refinement equip: Your logo as an engraving on the glass lid.



10678

Flective Gym

The spacious sports bag is made of a highly reflective special textile. It reflects even the smallest amount of light and thus ensures greater safety through visibility. Perfect for all sports and leisure activities, even in the dark. Your logo will also shine brightly.



Size: 410 x 320 x 10 mm; Weight: 96 g



Screen printing 1C: Bis DIN A5; Textil print 4C: Bis DIN A6



Made from
recycled PET



10556

Headlight

One-size knitted hat with removable, rechargeable LED headlamp. For more visibility in the dark and better visibility when working or doing sports. Four powerful SMD lights can be dimmed in three levels. After up to four hours of continuous operation, simply recharge via the flat USB-A plug on the PC.

Standard colours: grey and black.

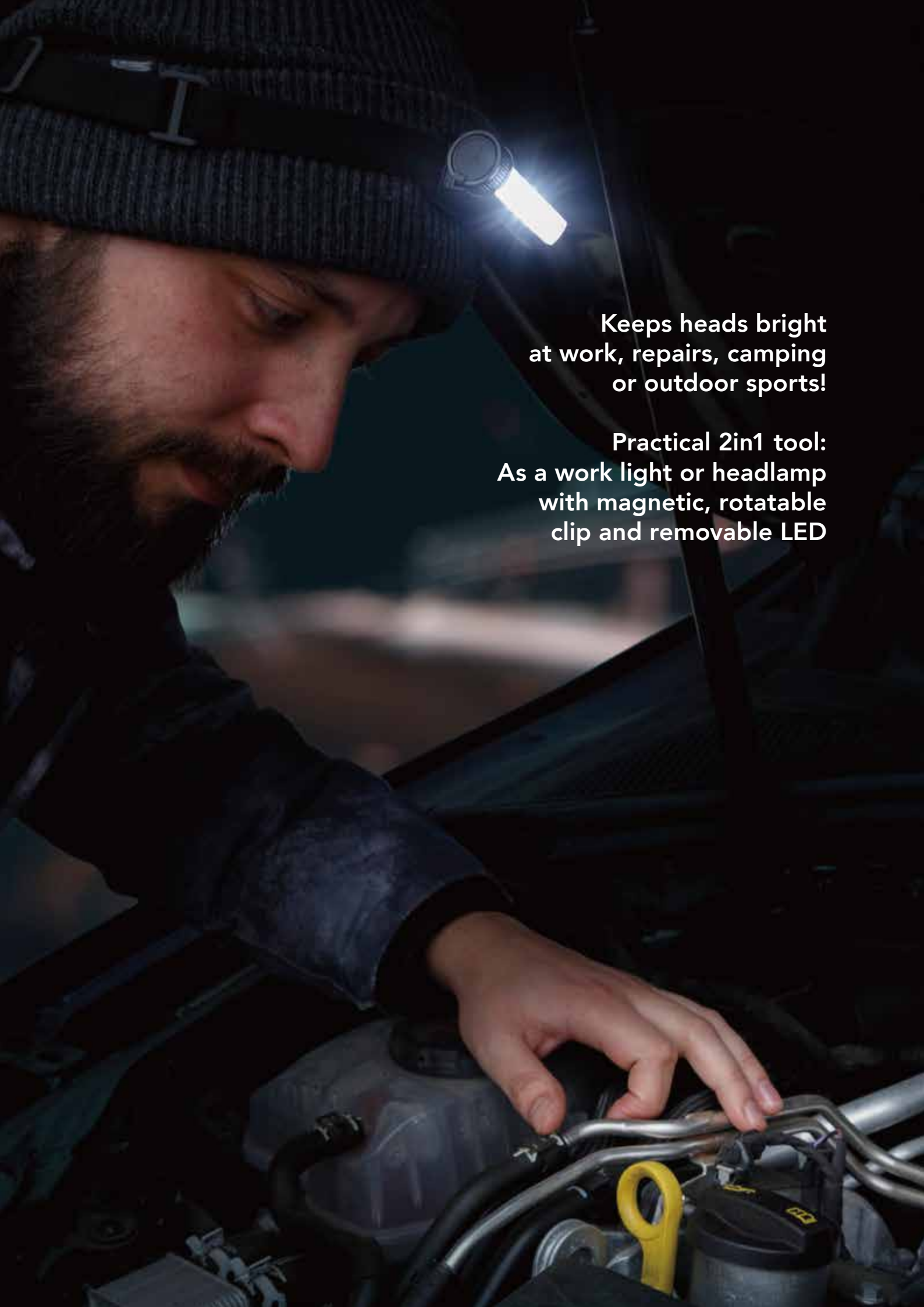
Many other colours available on request from 500 pieces on. Customised with logo as embroidery motif or on textile label.



Size: 205 x 210 x 25 mm; Material: RPET, ABS
Battery: Li-Po / 250 mAh / 3,7 V / 0,925 Wh
LED Output: 150 Lumen



Embroidery: 50 x 40 mm; Label: 20 x 20 mm



Keeps heads bright
at work, repairs, camping
or outdoor sports!

Practical 2in1 tool:
As a work light or headlamp
with magnetic, rotatable
clip and removable LED



10050

Combi-Worklight

A true must-have for crafts, camping or outdoor sports! The Combi-Worklight combines two highly practical features: As a work light and as a lightweight headlamp, so your hands are always free. Very useful thanks to the swivelling clip and a magnet. With robust, splash-proof metal housing, powerful rechargeable battery and type C connection as well as eight different LED modes: 4 x white light, green, blue, red, flashing red. For perfect visibility with 250 lumens, customised with your logo as a laser engraving or print.



Size: 80 x 30 x 21 mm
Material: ABS, Aluminium, Nylon
Battery: 600 mAh
Input: 3,7V / 0,5 A
Output: 5V / 1,2A
Max. Brightness: 250 lm
USB-Version: Type C



Laser engraving or Pad printing: 40 x 5 mm

XPE LED
150 LM / 60 LM

COB LED
350 LM / 150 LM

Highly sensitive...
sensors

Size adjustable
soft headband

Customised with single
color logo print

11022

Spacelight

Modern, ultra-light LED headlamp.
For perfect visibility during outdoor sports
or working with your hands.

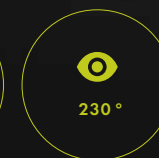
Ultra light and flexible, Spacelight can be easily adapted to any size. The intelligent sensor control system enables touch-free operation via intuitive gestures. With a 350 lumen COB LED surface at the front, a spotlight at the side and a total of four different lighting modes, Spacelight provides 230 degrees of wide-angle illumination for perfect visibility. Customised with logo print on the front next to the illuminated surface.



Size: 100 x 55 x 35 mm
Material: ABS, Rubber
Battery: Li-Ion 1.200 mAh / 3,7 V / 4,44 Wh
Input: DC 5 V / 1 A
Output: 350 Lumen / 10 W
USB-Version: Typ-C
Protection class: IPX 4



Pad printing:
15 x 10 mm / 30 x 18 mm



11215

Spot Fingers

The ideal light exactly where you need it.
Practical and powerful for crafts and sports.

Wireless LED light gloves for many outdoor or indoor activities such as camping, sports, fishing and for repairs on the car or in the house – especially when no one is around to hold a flashlight. The fingerless gloves made of breathable nylon two powerful LED spots (on the thumb and index finger) always illuminate exactly what you are working on. This keeps your hands free at all times!

Flexibly adjustable to any size thanks to elastic stretch nylon and Velcro fastening. The soft cotton inside guarantees a comfortable wearing comfort. Rechargeable via USB type C – charging cable included. A perfect gift for active craftsmen or sports enthusiasts with your logo print on the central control element.



Size: 35,5 x 14 x 1,3 cm; Material: Nylon, cotton, PP
Battery: Li-Ion; 150 mAh; Input: 5V / 1A; Output: 0,15 A
Power output: 0,1 W; USB-Version: Typ-C
Protection class: IP 55



Pad printing: 20 x 10 mm





11212

Mini-Worklight

The mini worklight for the key ring not only offers an astonishingly powerful light source, but also convinces with many practical additional functions, such as a magnet on the back for attachment to all metal surfaces, a carabiner, the fold-out stand holder, a cap lifter and a tripod thread.

With four different light modes, it is an extremely practical light for all kinds of repairs, a torch for on the go or an emergency light which is – light, small and portable – is always at hand when you need it. Rechargeable via Type C, charging cable included, and personalised with your logo on the front.



Size: 70 x 45 x 21 mm; Material: ABS, Metal
Battery: 150 mAh; Input: 3,7 V / 0,3 A; USB-Version: Typ-C



Laser engraving: 35 x 8 mm



- ✓ Amazingly bright work light
- ✓ Powerful LED/COB
- ✓ 7 light modes: 5 x white, 1 x red, 1 x flashing red
- ✓ 7 integrated screwdriver bits
- ✓ bottle opener, 7 x spanners, disc breaker

- ✓ Operating time of up to three hours
- ✓ Rechargeable via type-C connection, charging cable included
- ✓ Additional tripod thread
- ✓ High-quality metal finish
- ✓ Protection class IPX6 (waterproof)

10054

Mini-Worklight Tool

Surprisingly bright and versatile work light for the key ring. The powerful COB / LED provides up to 800 lumens of illumination and has seven different light modes. Ideal as a work or emergency light for car repairs, crafts or all outdoor activities.

In addition, the multi-tool has four screwdriver bits on the back that can be inserted into the holder on the side. The bottle opener integrated in the robust metal housing, an emergency window breaker and seven different spanners make the Mini Worklight Tool a versatile all-rounder.



Size: 90 x 45 x 21 mm; Material: ABS, Metal; Battery: 400mAh;
Input: 3,7V / 0,5A; Brightness: max. 800 lm; USB-Version: Typ-C



Laser engraving: 30 x 8 mm



11018

A quick-change artist Lantern LED

Stylish cordless design lantern with three dimming levels and one-touch control. The 360° rotating joint on the solid wood handle allows the Lantern LED to be transformed from a bedside table into a desk lamp in no time at all. The LED element can be adjusted to any desired angle via the same axis and unfolded to form an attractive lantern. For atmospheric, eye-friendly light indoors or outdoors. With powerful, rechargeable battery for cordless operation for up to operation of up to 12 hours, USB connection and customised logo print and wood engraving.



Size: 194 x 142 x 40 mm
Material: ABS, Wood, Metal
Battery: Li-Po 1.200 mAh / 3,7 V / 4,44 Wh
Input: DC 5 V / 1A; Output: 340 mA
USB-Version: USB auf DC2.0



Pad printing: 35 x 12 mm, 35 x 9 mm
CO² Laser engraving: 25 x 60 mm



11209

The sensitive Sensor LED Wood

Sensor LED Wood convinces directly through an elegant design and the attractive combination of solid, frosted acrylic glass with beautiful walnut wood. In combination with the dual sensor technology, there are a multitude of possible applications: Use the luminaire manually as a easy to handle standard lamp, as a corridor or cupboard light that is automatically activated by movement or with the photo sensor, which activates or deactivates the ambient light independently.

Recessed magnets allow Sensor LED Wood to be attached to all metallic surfaces or hung in the supplied wall bracket. This bracket has a strong 3M contact adhesive surface on the back and can be attached to many surfaces in seconds without the need for screws.

The integrated, rechargeable battery and the energy-efficient, warm white LEDs ensure a long operating time of up to 8 hours. A stylish promotional gift with your logo as a CO² engraving on the wooden handle or base.



Size: 180 x 25 x 25 mm
Material: Walnut, Acryl-Glas
Battery: Li-Po; 500 mAh
Input: DC 5 V
Output: 3 V
Power output: 2.2 W
USB-Version: Typ-C



CO² Laser engraving: 40 x 10 mm





11248

Infuser

nser high-quality glass infuser combines design and functionality:
The double -walled glass cylinder reliably protects your hands
Heat and keep your drinks warm or cool - without plastic.

Ank of the innovative two-part structure with a stainless steel filter
Element can be filled from both sides. No matter whether fine tea,
aromatic berries, fresh ginger or herbs- they decide.how you want
to enjoy your drink.

By simply turning the cylinder and a slight rotation on the stainless
steel ring, you can control the intensity of the aroma individually.
A clever, simple solution for enjoyment on the go or at home.

*Personalization possible: laser engraving on the stainless steel ring
for one individual finish.*



Size: Ø 72 x 239 mm

Material: Borosilicate glass, stainless steel 304, stainless steel 201



Laser engraving on metal surface: 30 x 10 mm



11238

T.Stick

For stylish tea enjoyment!

The two-part tea egg combines robust, food-like stainless steel with one elegant, conical
handle made of beech wood. This not only ensures durability, but also simple handling.

Particularly practical: the supplied wooden coaster. After pulling the tea you can comfortably
place the tea egg on the coaster-clean, uncomplicated and without drops. Whether in the
office or at home- as a stylish gift for tea lovers the T.Stick testifies both by shape and
functionality.

Individual refinement:

Engraving on the grip.



Size: 49 x 49 x 138 mm

Material: stainless steel 304, FSC certified beech wood



laser engraving: 25 x 8 mm





The exclusive recipe book with great ideas for everyone
There is taste free of charge!
On request & for an additional charge, also with your logo.



10979

Smooth2Go

Juices, smoothies and shakes taste freshly
Simply prepares best.
With Smooth2go you always have a small,
mobile mixer where you are currently
need - including recipe book. Thanks to the
fitting screw cover, the
Tumbler made of real glass after mixing in
the handturn over to the practical cup-to-go.
Perfect for picnics, execution or
parties. With 18,000 revolutions per minute,
additional protective glass, child locking and
powerful battery is no longer standing in the
way of a mobile freshness of freshness.



Size: 210 x Ø 70 mm
Material: ABS / Glas / Stainless Steel
Battery: Li-Po; 2.000 mAh / 3,7 V / 19,24 Wh
Input: DC 5 V / 1 A; Volumen 380 ml
Ladezeit: 3-5 h; Performance: 18.000 rpm



Pad printing:
25 x 12 mm (Mixer); Ø 54 mm (Lid)



11225 & 11228

ISOMug M & L

Double -walled stainless steel drinking cups with elegant white
Finish and faceted pages. Ideal when traveling, in the office or in the car.
Available in size M for 300 ml or size L for 500 ml.

Practical details like the large screw cover that is a simple
Filling directly on your coffee machine enables the stylish
Rope loop as a handle on the lid and the silicone closure make
the Isomug particularly suitable for everyday use.
With these long -lasting cups, you actively contribute to
environmental protection by foregoing disposable products and plastic.

Thanks to the double-walled vacuum insulation made of stainless
steel, you stay drink - whether hot or cold - for hours at the ideal
temperature. Optionally, we engravate the isomugs with your logo
at an additional cost on the faceted pages.

ISOMug M



Size: 70 x 70 x 145 mm
Material:
Stainless steel 304; Stainless steel 201
Volumen: 300 ml



laser engraving:
40 x 15 mm

ISOMug L



Size: 70 x 70 x 195 mm
Material:
Stainless steel 304; Stainless steel 201
Volumen: 500 ml



laser engraving:
40 x 15 mm





11224

Basket

Large, sage-colored storage basket made of stable Steel battle with bamboo handles. Perfect as a stylish storage solution for work or hobby matters, as a storage space for accessories or as a shopping basket for the Market visit.

Particularly practical:

The content is clearly visible at any time due to the mesh.

An attractive lifestyle advertising article that integrates your brand into the everyday life of your customers.

On request and for an additional charge with a logogravure on the bamboo grip.



Size: 400 x 250 x 170 mm
Material: Steel, powder coating
Bamboo, aluminum
Color: sage



Engraving on a wooden handle:
45 x 15 mm





Logo Insektenhotel & Logo Insektenhotel mini

The charming insect hotels made of certified wood offer many different beneficial insects shelter, valuable nesting help or winter quarters all year round. At the same time, you make your company's ecological responsibility visible to everyone! Because your logo as a customised wood cover forms the front of the insect shelters.

Front covers made of birch wood in the shape of your logo included!



10128-00

Logo Insektenhotel



Size: 250 x 250 x 50 mm Material: Certified wood, wire mesh, bamboo cane, drilled hardwood, pithy woods and wood wool; Weight: 780 g
Mounting: With fastening straps on the back



Logo-Cover / CO² Laser cut: 200 x 200 mm

10051

Logo Insektenhotel mini



Size: 110 x 110 x 45 mm Material: Certified wood, bamboo cane; Weight: 255g
With fastening strap on the back



Logo-Cover / CO² Laser cut: 110 x 110 mm

11204

Logo Vogelfutterhaus

With this kit for a bird feeder, you can create an attractive and necessary food for domestic garden and wild birds.

The responsibility that you have as a company for the protection of native species cannot be overlooked. Because your logo – as a CO² laser-cut contour – forms an entire side wall of the of the house.

In a set with eight plug-in parts made of unpainted, certified wood and building instructions. To hang or place in the garden or on the balcony.

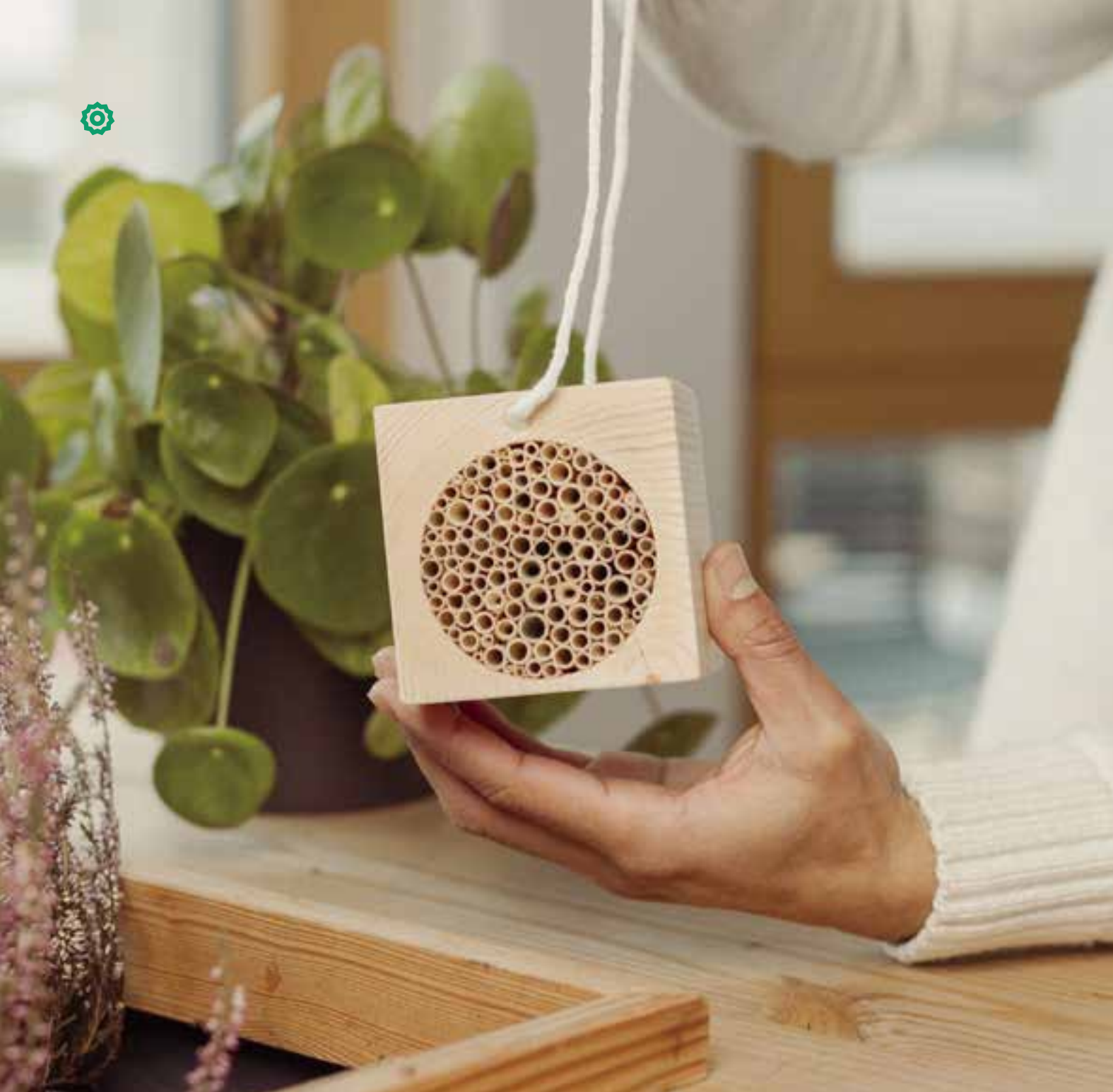


Size: Kit – 30 x 180 x 60 mm; Assembled – 155 x 180 x 210 mm
Material: Certified Wood; Scope of delivery: Set of eight parts
Packaging: Single / recycled cardboard; Accessories: Bilingual instructions



Logo-Cover / CO² Laser cut: 150 x 80 mm



**80099 & 80100****Wildbienenquader**

More nature & sustainability goes not: the wild bee blocks correspond all biological guidelines for meaningful Insect hostels and nesting aids: they are Spreiel-free, have a high level of acceptance Thanks to 10 cm tube depth, they are free of harmful substances And untreated. A brilliant upcycling Wood residues and domestic reed. With Your logo as an engraving in the wood. For an additional charge cotton cord in many different Colors available.

80099 Wild bee blocks large

Size: 87 x 87 x 100 mm



Laser engraving on wood / two possible positions: 70 x 50 mm

80100 Wild bee blocks small

Size: 76 x 76 x 100 mm



Laser engraving on wood / two possible positions: 70 x 40 mm

Material: Wood, jute, reed

**80101****Wildbienenblockhaus**

Our family is our wild bee block house the perfect home. For hanging or setting up. Clearly visible: your logo as an engraving on the black or white weather protection made of aluminum.



Size: 180 x 65 x 70 mm

Material: Aluminium, Holz, Jute



Laser engraving on aluminum / two possible positions 50 x 50 mm



11005

5in1 Multicharger

Universal 5in1 charging and data cable. With combination option USB C or USB A (standard) as output connector to USB Type C, Micro USB and Lightning. A single cable for all newer smartphones, MacBooks, USB Type C power supply units or other devices.

In addition to the charging function, 5in1 MultiCable allows for simple and secure data transfer (for example between laptop and smartphone). The double-insulated, one-metre long cable is durable and robust. A sheathing with nylon fabric as well as anti-kink reinforcements on the aluminium connections reliably protect against cable breakage or wear and tear.



Size: 1000 x 13 x 15 mm; Material: Textile, Alu
Input: DC 5 V / 2A; Output: DC 5 V / 2 A // Type-C 9V / 2A
USB A-Version: 2.0; Data transfer: 33,9 MB/s



Pad printing , Engraving: 28 x 8 mm



A highlight for
your customers' desks!

87



10064

Glow Hub

A beautifully designed USB distributor with a natural bamboo housing. Simplifies working and charging multiple devices with two USB-A and one USB-C port. Simply connect to the USB-A port of your computer and use with up to three devices simultaneously. Your logo is engraved on the generous, high-gloss inlay and is impressively illuminated when in use, so it is always in your customers' view.



Size: 79 x 36 x 10 mm
Material: Bamboo, ABS
Input: 5V / 1A
USB-Version: 2 x USB A 2.0; 1 x USB C

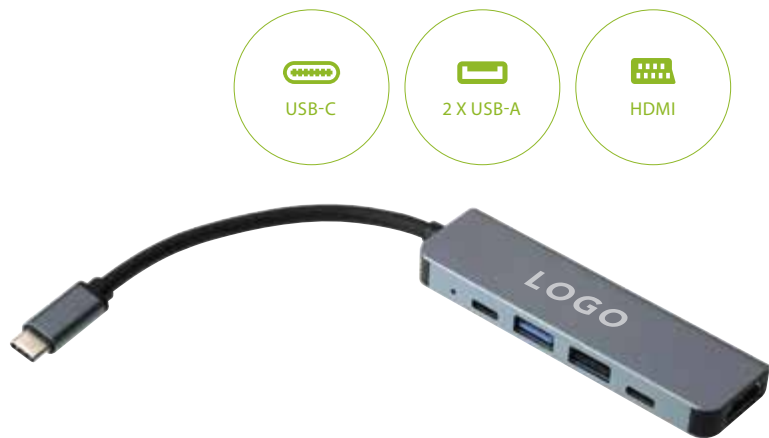


Illuminated engraving:
55 x 22 mm
Luminous logo: white



11027

5in1 for every workspace!
MultiHub



Practical 5in1 distribution box for any modern desk. Light and elegant with high-quality aluminium housing. With 2 × USB-A (3.0 and 2.0), 1 × USB type C, 1 × HDMI connection to USB type C. Particularly useful for all newer devices with type C connection – whether in the office or on the road. Your logo as a print or engraving on the aluminium case will always be in view of your customers.



Size: 93,3 x 28 x 10 mm; Material: Aluminium, PVC
Input: Typ-C
Output: 1 × USB 3.0, 1 × USB 2.0, 1 × Typ-C,
1 × HDMI, 1 × Typ-C (charging only)
USB-Version: Typ-C, Typ A (2.0 & 3.0)



Pad printing or Engraving: 70 x 15 mm



68

10641

RFID Blocker Card

This active fieldblocker card protects your entire wallet from RFID / NFC spying attempts. Needing no battery, the card draws its energy from the scan source and builds up an electronic protective field that makes all 13.56 Mhz cards (credit cards, EC cards, ID cards, etc.) invisible to any scanners. No additional RFID protective cover necessary. **Digital printing on both sides included.**
Supplied in a sustainable teabag.

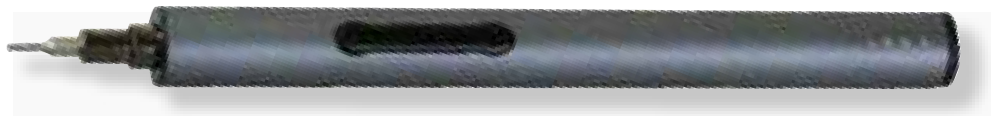
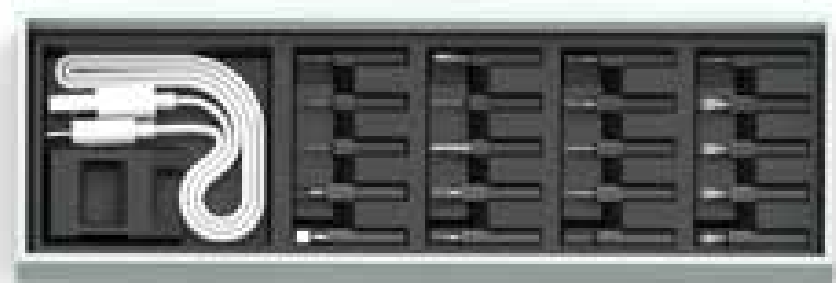


Size: 85,5 x 54 x 1,6 mm; Material: PVC



Digital printing: on both sides, full surface





10994

BitBoy

Cordless mini screwdriver set with electric screwdriver, 20 magnetised precision bits and USB charging cable in beautiful gift box. Perfect for difficult repairs of smartphones, cameras, etc.

- ✓ Torque of 0.12 / 3 Nm
- ✓ LED target light and charge level indicator
- ✓ Ergonomic handle
- ✓ Magnetic tool holder
- ✓ High-quality aluminium box



Size:
Screwdriver – 180 x Ø 16 mm;
Set: 220 x 70 x 40 mm
Material: Metal;
Battery: Li-ion 260 mAh / 3,7 V / 0,96 Wh;
Operating time: 5-6 h; Torque: 0,12 / 3 Nm;
Hardness grade: 57 – 60



Pad printing / Engraving:
40 x 9 mm



10962

BitBox

Precision bit set with 24 attachments and magnetic screwdriver shaft in a high-quality aluminium storage box with gunmetal finish. Particularly suitable for precision repairs such as electronics, eyewear or watches.

- ✓ High material quality and hardness
- ✓ Labeled magnetic compartments
- ✓ Easy handling due to push & click fastener
- ✓ Magnetic bit holder
- ✓ Ergonomically designed tool



Size: 169 x 66 x 16 mm;
Material: Aluminium / Metal;
Hardness grade: 58 – 60; Weight: 217 g



Pad printing / Laser engraving:
30 x 20 mm



usb.



11218

USB Dual Pro

Modern, elaborately crafted USB / OTG stick in 3.0 version made of high-quality stainless steel. The quality of the material and workmanship can be felt and seen here. Switch between the two connections simply by turning the stick. Key fob included, storage capacity as required. A classic and elegant advertising medium for your logo as a print or engraving.



Size: 63 x 16 x 9 mm
Colour: gunmetal; Material: Metal
Capacity: 16 - 128 GB
USB Version: 3.0



Laser engraving or Pad printing: 33 x 10 mm



11034

USB Stick Metal Premium

Stylish USB 2.0 stick with high-quality metal housing. The swivelling handle makes it easy to open and cover the memory unit and has a recessed hanging option for key rings or carabiners. Available in silver or with a dark gunmetal finish with a capacity of between 4-64 GB. Customised with laser engraving or printing.



Size: 60 x 17 x 10,5 mm
Colour: gunmetal / silver; Material: Metal
Capacity: 4 - 64 GB
USB Version: 2.0



Laser engraving: 32 x 12 mm



10738

USB Moneyclip

USB stick and document or money clip in one. Holds not only your notes, but also folders or catalogues together.



Size: 56 x 12,5 x 6 mm
 Colour: silver; Material: Metal
 Capacity: 1 - 16 GB
 USB Version: 2.0



Pad printing , Laser engraving: 40 x 10 mm



10995

USB OTG-C HQ 3.0

Elaborately crafted USB 3.0 / OTG stick. Combines USB Type C and OTG technology. With matt stainless steel housing and practical swivel handle.



Size: 32 x 12 x 7 mm
 Colour: silver; Material: Metal
 Capacity: 16 - 64 GB
 USB Version: 3.0



Pad printing , Laser engraving: 15 x 7 mm



10667

USB 009 Premium 2.0

High-quality USB stick with robust metal housing and rotatable handle. Customisable with timeless laser engraving and desired capacity from 2 to 64 GB.



Size: 52,8 x 17,7 x 9,4 mm
 Colour: silver; Material: Metal
 Capacity: 1 - 64 GB
 USB Version: 2.0



Pad printing , Laser engraving: 35 x 13 mm

stylish, high quality & durable Metal USB flash drives



10960

USB Stand

High-quality USB flash drive made of metal with smart additional function as a holder for your mobile phone. Suitable for devices and thanks to the practical eyelet (for a key ring, for example) always with you.



Size: 43 x 12 x 4,5 mm
 Colour: silver, gunmetal; Material: Metal
 Capacity: 1 - 64 GB
 USB Version: 2.0



Laser engraving: 25 x 10 mm



10669

USB Oreon

Ultra-modern USB 2.0 flash drives with high-quality metal casing and extravagant thick key ring with lobster clasp. Available in three colours: silver, gunmetal and rose gold.



Size: 36 x 12,1 x 4,7 mm
 Colour: silver, gun-metal, rosegold
 Material: Metal
 Capacity: 1 - 64 GB
 USB Version: 2.0



Laser engraving: 24 x 10 mm



10648-01

USB Lounge

Stylish USB stick in minimalist design. High-quality aluminium in combination with elegant, black imitation leather loop. With logo engraving or print on the strap.



Size: 70,5 x 12 x 4,5 mm
 Colour: silver / black
 Material: Vegan leather, Metal
 Capacity: 1 - 32 GB
 USB Version: 2.0



Pad printing , Laser engraving: 24 x 10 mm



USB OTG-C HQ 3.0
 CLASSY & VERSATILE



USB LOUNGE IN
 A STYLISH GIFT BOX



10502
USB Apollo
+
Size: 39 x 12 x 5 mm
Colour: gunmetal; Material: Metal
Capacity: 2 - 64 GB
USB Version: 2.0
✂
Laser engraving: 18 x 10 mm



10501
USB Mercury
+
Size: 43 x 17,5 x 4 mm
Colour: silver; Material: Metal
Capacity: 2 - 64 GB
USB Version: 2.0
✂
Laser engraving: 16 x 10 mm



10503
USB Discovery
+
Size: 69 x 12 x 5 mm
Colour: silver; Material: Metal
Capacity: 2 - 64 GB
USB Version: 2.0
✂
Pad printing , Laser engraving: 45 x 11 mm



10668
USB Element 3.0
+
Size: 43 x 12,3 x 4,5 mm
Colour: silver; Material: Stainless steel
Capacity: 1 - 64 GB
USB Version: 3.0
✂
Laser engraving: 20 x 8 mm



10579
USB Nugget
+
Size: 39 x 12 x 4,5 mm
Colour: silver, gold; Material: Metal
Capacity: 1 - 64 GB
USB Version: 2.0
✂
Laser engraving: 22 x 8 mm



10768
USB Pico
+
Size: 47 x 12 x 5 mm
Colour: silver; Material: Metal
Capacity: 2 - 32 GB
USB Version: 2.0
✂
Laser engraving: 24,5 x 8 mm



11013
USB Slide 2
+
Size: 57 x 20 x 12,15 mm
Colour: Metal / black;
Material: Metal, ABS, Silicone
Capacity: 4 - 64 GB; USB Version: 2.0
✂
Laser engraving / Pad printing: 44 x 9 mm



10767
USB Climb
+
Size: 52 x 17 x 5 mm
Colour: silver; Material: Metal
Capacity: 2 - 32 GB
USB Version: 2.0
✂
Laser engraving: 14,5 x 9 mm



10769
USB Belo
+
Size: 47 x 16 x 5 mm
Colour: silver; Material: Metal
Capacity: 2 - 32 GB
USB Version: 2.0
✂
Laser engraving: 10 x 25 mm



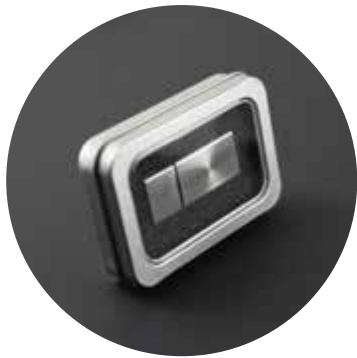
10938
USB Element
+
Size: 43 x 12,3 x 4,5 mm
Colour: silver
Material: Stainless steel
Capacity: 1 - 32 GB
USB Version: 2.0
✂
Laser engraving: 20 x 8 mm



10578
USB Key
+
Size: 57 x 24 x 3 mm
Colour: silver; Material: Aluminium
Capacity: 1 - 32 GB
USB Version: 2.0
✂
Pad printing , Laser engraving: 35 x 10 mm



10167
USB 158
+
Size: 51 x 20 x 10 mm
Colour: silver; Material: Stainless steel
Capacity: 1 - 32 GB
USB Version: 2.0 / 3.0
✂
Pad printing , Laser engraving: 17 x 30 mm



The final touch
Feel free to ask us
about our USB gift boxes
see page 106



10581

USB 009 Wood

Our top seller also with wooden casing! Robust USB stick with a beautiful wooden body and rotating metal handle. Countless customisation options have made the 009 an absolute power seller. Its further development in maple, bamboo or walnut wood from sustainable forestry is the perfect advertising medium for all brands with a connection to nature or materials.



Size: 57 x 19,5 x 11 mm
Colour: Bamboo, Maple, Walnut
Material: Wood, Metal
Capacity 1 - 64 GB
USB-Version: 2.0 / 3.0



Pad printing , Laser engraving:
27 x 12 mm



11217

USB Stick Twister Nature

Great USB stick with natural bamboo casing and rotating protective cover. Packaged in a compostable teabag and laser engraved with your logo - a unique and sustainable gift for customers, partners or employees.

*Bamboo is a natural material.
Therefore the colour may vary slightly.*



Size: 64 x 19 x 13 mm
Material: Bamboo
Capacity: 16 GB



Laser engraving: 30 x 13 mm





Greencard USB-Sticks

Three millimetre thick kraft cardboard, ultra-flat VOB memory, capacity up to 32 GB and plenty of space for your motif.



10986

USB Greencard Round



Size: 61 x 51 x 3 mm; USB-Version: 2.0



Pad printing: 30 x 10 mm
Digital printing: full surface



10985

USB Greencard Square



Size: 60 x 18 x 3 mm; USB-Version: 2.0



Pad printing: 30 x 10 mm
Digital printing: full surface



10984

USB Greencard Key



Size: 58 x 28 x 3 mm; USB-Version: 2.0



Pad printing: 30 x 10 mm
Digital printing: full surface



10983

USB Core

Beautifully shaped USB stick made of walnut wood in organic, elliptical shape. USB version 2.0.



Size: 47 x 27 x 9 mm
Material: Walnut
Capacity 2 - 64 GB
USB-Version: 2.0



Laser engraving: 12 x 6 mm



10987

USB Woodbox

High quality manufactured box with embedded USB stick made of beautiful maple wood.



Size: 60 x 30 x 9 mm
Material: Maple
Capacity 1 - 64 GB
USB-Version: 2.0



Laser engraving: 30 x 15 mm



YOUR LOGO ENGRAVING
INCLUSIVE!

re:think packaging

The free standard packaging for our USB sticks is the **tea bag**.

It optimally protects your goods from scratches and is also 100% compostable. Optionally, we offer a variety of additional packaging and exclusive gift boxes for your USB sticks.

A beautiful and sustainable solution is **USB Seedbox**! Not only looking great, but also gives a little piece back to nature: The handmade paper contains plant seeds. After use simply plant it and it will start to sprout.



more
USB gift boxes
page 106



10369

USB Genius

Size: 32 x 12 x 6 mm
 Colour: red, blue, black, green, light blue, silver
 Material: Aluminium
 Capacity: 1 - 32 GB
 USB Versionen: 2.0 / 3.0



Pad printing , Laser engraving: 26 x 11 mm



10739

USB Genius 2

Size: 35 x 16 x 6,9 mm
 Colour: red, blue, black, green, silver
 Material: Metal
 Capacity: 1 - 16 GB
 USB Version: 2.0



Laser engraving: 13 x 25 mm



10580

USB 039

Size: 58 x 24 x 12 mm
 Colour: blue, red, black, white
 Material: ABS Softtouch-Finish
 Capacity: 1 - 64 GB
 USB Version: 2.0



Pad printing: 18 x 9 mm



10129

USB Deluxe

Size: 39 x 13 x 4 mm
 Colour: silver, chrom
 Material: Metal
 Capacity: 1 - 32 GB
 USB Version: 2.0



Pad printing , Laser engraving:
 26 x 10 mm



10670

USB Slide

Colourful USB flash drives with soft-touch casing and leather strap. Simply retract or extend the USB element with the slide in or out with the small slider. Customised with logo as print.



Size: 57 x 22,5 x 10 mm
 Colour: red, black, blue, green, white, yellow
 Material: ABS (softtouch), vegan leather
 Capacity: 1 - 64 GB
 USB Version: 2.0



Pad printing: 45 x 14 mm



10577

USB Mini Clip

Size: 38 x 13 x 4 mm
 Colour: blue, green, red, black, white
 Material: ABS; Capacity: 1 - 64 GB



Pad- / Digital printing: 36 x 10 mm



Ideal for catalogues or
 Image brochures



10281

USB 103

Size: 73 x 22 x 8 mm
 Colour: blue, red, black, silver, white
 Material: ABS
 Capacity: 1 - 64 GB
 USB Version: 2.0



Pad printing, Digital printing:
 38,5 x 14 mm; 44 x 14 mm



10044

USB 012

Size: 67 x 22 x 10 mm
 Colour: red, blue, black
 Material: ABS, brushed aluminium
 Capacity: 1 - 64 GB
 USB Version: 2.0



Pad printing, Digital printing, Laser engraving:
 32 x 14,5 mm / 40,5 x 14,5 mm



10043

USB 011

Size: 69 x 24 x 9mm
 Colour: red, blue, black
 Material: ABS, brushed aluminium
 Capacity: 1 - 64 GB
 USB Version: 2.0



Pad printing, Laser engraving:
 32,5 x 13 mm / 41 x 13 mm





11010

USB Glow 3

High-quality USB 2.0 flash drives made of metal in silver or gunmetal. Engraved logo lights up when used and ensures a lasting advertising effect. Key ring included!

LED colour optionally white, blue, red or green.



Size: 55 x 10 x 4 mm
Material: Zinc alloy
Capacity: 1 - 64 GB
USB-Version: 2.0



Laser engraving: 25 x 8 mm



10958

USB Glow 2

Practical USB flash drive with slider function and glow logo that lights up when in use. Standard light colour: white.

From 100 pieces, optionally with blue, green or red or red LED.



Size: 58 x 23 x 11,2 mm
Material: ABS
Capacity: 1 - 64 GB
USB-Version: 2.0



Laser engraving: 30 x 10 mm

**USB Cards & USB Disc**

Whether round or as a business card, made of high-quality aluminium or plain white. Here you have the complete format for your advertising! Photo-realistic printing on both sides with stylish engraving and with a fold-out COB memory unit – already recorded with your data on request.



10383

USB Card 146

Size: 86 x 54 x 2,5 mm
Colour: white
Material: ABS
Capacity 1 - 64 GB
USB-Version: 2.0 / 3.0



Digital printing: on both sides, full surface



10582

USB Card 146 Alu

Size: 85,5 x 54 x 3 mm
Colour: silver
Material: ABS, Aluminium
Capacity 1 - 64 GB
USB-Version: 2.0 / 3.0



Laser engraving: 70 x 40 mm



10130

USB Disc

Size: 43 x 43 x 3 mm
Colour: white
Material: ABS
Capacity 1 - 32 GB
USB-Version: 2.0



Digital printing: on both sides, full surface



FULL-SURFACE, PHOTO-REALISTIC PRINT

10279

USB 009

Size: 54 x 19 x 10 mm
 Colour: black, white, green, orange, red,
 light blue, dark blue, customised
 Material: ABS, Metal
 Capacity 1 - 64 GB
 USB-Version: 2.0 / 3.0



Pad printing, Laser engraving,
 Doming, Digital printing: 27 x 12 mm



10811

OTG 009

Size: 68 x 18 x 10 mm
 Colour: red, blue, black, green,
 orange, white, customised
 Material: ABS, Metal
 Capacity 1 - 32 GB
 USB-Version: 2.0 & Micro-USB



Pad printing, Laser engraving,
 Doming: 27 x 12 mm

**009****Der USB mit drehbarem Metallbügel:**

Countless colour variations, finishing options and
 a wide range of material combinations.
 Customised in the colour of your choice from just 100 pieces.

10583

USB 009 Mini

Size: 30 x 14 x 6 mm
 Colour: blue, green, red,
 black, silver
 Material: ABS, Metal
 Capacity 1 - 64 GB
 USB-Version: 2.0



Pad printing, Laser engraving:
 14 x 10 mm



11035

USB OTG-C 009

Dual memory stick with Type A and Type C.

Convenient on-the-go memory stick with USB-A and
 Type-C connection. For all modern smartphones,
 computers or tablets.

The robust metal swivel handle with keyring attachment
 for easy opening and covering.

With capacity as desired between 16 and 64 GB,
 available in four different standard colours and special
 colours are available for as few as 100 pieces.
 Customised with print or engraving.



Size: 66 x 19 x 10 mm; Material: ABS, Metal
 Capacity: 1 - 64 GB; USB-Version: 2.0



Pad printing, Laser engraving: 27 x 12 mm



ADVERTISING

Only with an individual advertising your campaign becomes a well-rounded affair. The possibilities are manifold. We advise you at any time without obligation, with experience and personally to find the optimal creative or technical solution for your project. Here are some general tips about the individual processes and technical requirements.

COLOUR PRINTING (PAD PRINTING)

Pad printing is one of the most important processes for printing advertising material. Due to the flexibility of the „tampon“ it can be printed on all conceivable surface shapes and do not necessarily have to be flat.

LASER ENGRAVING

With laser engraving, the surface of the object to be inscribed is changed by means of a laser beam in such a way that a permanent water- and smudge-proof marking is created. In this way, almost all graphic shapes and lettering can be lasered onto lasered onto your products.

DIGITAL PRINT

The digital printing process has the advantage that the corresponding print data can be directly from the computer to the printing machine. A printing forme is therefore not required. Your data are image or vector files and are applied in colour mode C/M/Y/K – i.e. in four-colour printing.

DOMING

With doming, your logo is printed in offset or digital printing, then coated with a transparent resin. Your logo is thus optimally protected and is shown off to its best advantage. Domings are possible on many of our products and various sizes are possible!

PACKAGING

Functional and attractive packaging is part of a good product for us. Because the first impression is decisive.

That is why our standard packaging is functional, simple and sustainable made of unbleached, brown kraft cardboard.

Please also ask us about our additional packaging options, for example for USB sticks (see below) or finishing options for the standard packaging, for example with advertising print or ribbon artwork.



Just a few examples of USB add-on packaging:
Box 50 / Box 105 – Magnetic flip box / USB Box 146
Box 100 / Box 106

